

**PractiSafe**

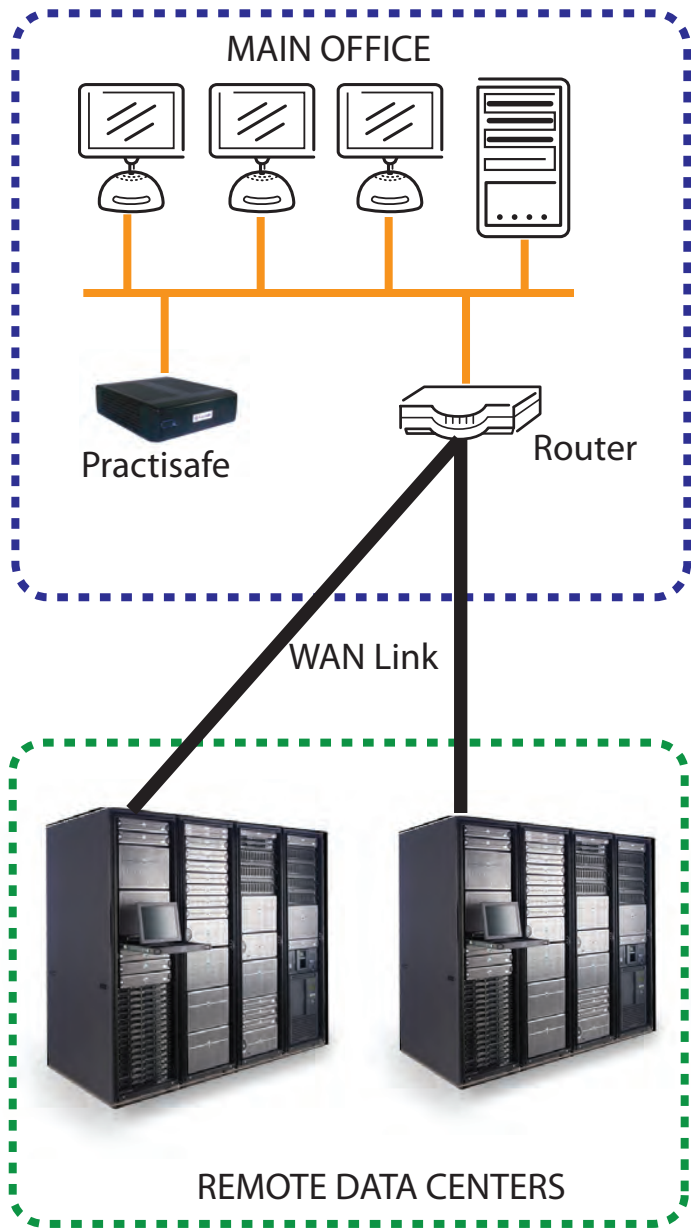
## Secure Backup Service for Patient and Practice Management Data

- **A data backup service versed in practice management restoration**
- **Increases business continuity through guaranteed backup and restore service**
- **Reduces time to recovery with hybrid on-premise / online storage plus remote / nearline datacenter storage**
- **Simple and fast integration into your existing infrastructure; zero-software install, no new user-interfaces to learn, no new tasks to set-up**



- **Integrated Practice Data Management:** ensures the right data is backed up to enable complete recovery in the fastest time based on our expertise
- **On-Premise Appliance:** Storage device installs onto your network to enable high-speed LAN recovery. Other remotely hosted sites impose bandwidth restrictions which unacceptably delay your recovery time
- **Off-Site Redundant Backup:** in addition to local backup, all data is automatically stored at two HIPAA-compliant data centers to provide further protection against fire, water, or theft.

- **Non-invasive:** no new software installed on your systems; other solutions require new software installation which can cause problems with practice management software.
- **Flexible Data Plans:** you remain in control of your information informed by trending reports sent to you. There are no overage fees if you exceed your plan; you decide whether to remove older information or increase your capacity plan
- **Compatible with:**  
Microsoft Windows XP, Vista, 7;  
Microsoft Windows Server® 2000, 2003, 2008;  
Mac OSX



**PractiSafe™** introduces the first data backup service focused on practice management software backup and recovery for healthcare providers. **PractiSafe** provides economical, reliable, and fast data backup and recovery services to maximize business continuity and minimize disaster recovery.

Typically, in hosted-only solutions, software is required to be installed on your servers and PCs to enable remote access for backup. Unfortunately, Internet-based hosted backup imposes bandwidth bottlenecks that would substantially delay backup and recovery. For example, with a 1.5Mbps link to your office, a 4GB database would require 5.9 hours to download from the Internet at top speed. So hosted backup worsens your downtime risk.

However, **PractiSafe** provides a local appliance to enable LAN-speed recovery of your practice data. Moreover, the appliance further distributes your data to dual remote data centers via secure transport and storage techniques to provide the benefit of geographic diversity to protect you from theft, fire, or flood. The local appliance and the remote data centers are further protected by a RAID system. So at any time, you have 6 copies of each backup at your disposal.

**PractiSafe** fully managed, affordable service alleviates time expended on self-managed processes that are prone to accidents, negligence, or theft.

***Call Today For Our Free Consultation  
On Your Practice Data Management Needs***

## Pricing

Service	Setup Fee	\$/GB	Comments
PractiSafe 320GB	\$495	\$2/GB	Local and Remote Backup
PractiSafe 500GB	\$545	\$2/GB	Local and Remote Backup

## Specification

Local Protection:	RAID1	Power:	120V-AC, ≤ 65W
Remote Protection:	RAID1	Size:	192 x 210 x 62 mm
NAS Hard-drive Capacity:	320, 500 GB options	Weight:	< 2 lbs
Network Interface:	1000BASE-CX GbE Interface	Mounting:	Stackable or mounting bracket

***Save Your Data, Save Your Practice***